



**LEADING MANUFACTURER OF ADVANCED TORQUE SYSTEMS**



***LIGHTER - FASTER - STRONGER***

## PNEUMATIC Torque range: 35 - 15.000 Nm

Highly advanced torque wrenches for heavy industrial use

- UNBELIEVABLY FAST AND ACCURATE
- ERGONOMIC DESIGN
- PATENTED GEARBOX TECHNOLOGY
- SMOOTH AND CONTINUOUSLY CONTROLLED BOLT TIGHTENING

### SINGLE & 2-SPEED SERIES



## BATTERY Torque range: 60 - 7.000 Nm

Ideal in situations where electricity or compressed air are unavailable

- IMPRESSIVE PERFORMANCE THANKS TO THE LATEST LI-ION BATTERY TECHNOLOGY
- EASY AND PRECISE TORQUE SETTING
- BRUSHLESS MOTOR TECHNOLOGY
- AUTOMATIC REACTION ARM RELEASE

### SELECT & DB SERIES



## ELECTRIC Torque range: 65 - 11.000 Nm

Digital torque setting with angle of turn control

- ERGONOMIC AND LIGHTWEIGHT
- EASY TO USE
- AUTOMATIC REACTION ARM RELEASE
- OPTIONAL BOLT TORQUE VERIFICATION FUNCTION

### MV-RAD SERIES



## ELECTRONIC Torque range: 135 - 15.000 Nm

Designed and built for heavy industrial use

- CONTROL BOX FOR ULTIMATE CONTROL
- FULLY TRACEABLE BOLTING JOBS WITH DATALOG REPORT SYSTEM
- DIGITAL TORQUE SETTING WITH ANGLE OF TURN CONTROL
- LED PASS / FAIL INDICATION ON THE WRENCH
- AVAILABLE WITH TRANSDUCER CONTROL (E-RAD-S)

### E-RAD SERIES



# Table of content

## Pneumatic

Single Speed series .....	6
2-speed series .....	7
TV series .....	8
Wheel nut series .....	9

## Battery

B-RAD SELECT BL series .....	10
Digital B-RAD PLUS series .....	11

## Electric

Digital MV-RAD series .....	13
-----------------------------	----

## Electronic

E-RAD BLU series .....	14
E-RAD S series .....	15

## Transducers

RAD Smart Socket™ serie .....	16
-------------------------------	----

## Calibration systems .....

17

## Accessoires .....

18

Reaction arms .....	18
---------------------	----

## Safety .....

19



Non  
Impacting



Safe &  
Reliable



According to  
European standards



EX  
approved



LABORATORY  
ACCREDITATION  
BUREAU  
ACCREDITED ISO/IEC 17025

Accredited  
ISO/IEC 17025



Lithium Ion  
battery



Bluetooth  
data exchange



Torque + angle  
function



Software  
managed



## Company profile

### **RAD Torque Systems B.V.**

RAD Torque Systems B.V. is located in Soest, The Netherlands, and is of New World Technologies Inc. As exclusive master distributor, RAD Torque Systems B.V. distributes RAD products to customers in Europe, the Middle-East and North Africa. Besides next day deliveries of tools and spare parts, RAD B.V. also provides quick repair, calibration and warranty services. RAD's fully trained staff has the latest technology at their disposal for servicing every RAD tool.



#### ◆ **Service, repair & warranty**



### **New World Technologies Inc.**

New World Technologies Inc. is a leading Canadian manufacturer of pneumatic, battery powered, and electronic pistol grip torque wrenches which are marketed under the RAD trademark. RAD products have proven to be successful all over the world in industries such as oil & gas, petrochemical, mining, aerospace, power generation, and manufacturing.

New World Technologies Inc. continues to invest and employ the latest technology to achieve the highest level of innovation, quality and performance – which has resulted in multiple patents. New World's extensive in-house machining facilities ensure maximum flexibility and responsiveness enabling quick deliveries and customer satisfaction.



How RAD is made video



***New Word Technologies features an ISO/IEC 17025 certified calibration Laboratory ensuring maximum quality control and full calibration traceability.***



# RAD Products

**RAD pistol grip torque wrenches** offer a fast and reliable solution for the installation and removal of heavy-duty fasteners in a variety of industries that require high accuracy, power and safety. RAD's patented planetary gear reduction drive system delivers one of the highest power-to-weight ratios of any controlled bolting system and has 88 times less vibration than impact wrenches. No risk of HAVS injuries and the exclusive low profile reaction arm takes virtually all the operational load off the operator.



◆ **For bolting safety, RAD torque wrenches set the standard!**

## **Our focus - Planetary gear reduction technology**

All RAD torque wrenches have one thing in common: they all use the patented planetary gear technology which was designed over 25 years ago and has been fine-tuned ever since. With this focus and experience we have managed to built gear reduction torque wrenches that are the most lightweight, compact and reliable available on today's industrial market.

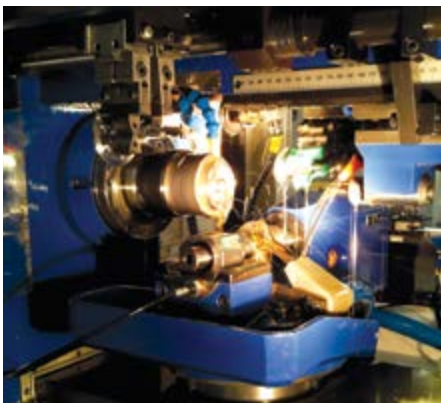


## **Innovation, our continuous drive**

RAD's ongoing investment in Research and Development ensures that RAD will continue to lead the bolting industry with innovations such as the E-RAD, Digital battery torque wrenches and, the Smartducers. RAD believes that innovation drives performance.

## **What are the advantages?**

Planetary gear driven wrenches, as opposed to conventional torque tools have the advantage of continuous rotation while applying controlled torque. This makes them much faster than conventional hydraulic wrenches and with their pistol grip they are safer and more ergonomic. RAD's motor is built right in the handle, so no longer the hassle of bringing a heavy and expensive hydraulic pump to the jobsite.



## RAD single speed

The experience in gearbox engineering and design has brought about RAD's latest generation in planetary gearboxes – RAD DX series. Designed for heavy duty usage in a variety of industries worldwide, RAD DX series torque wrenches offer:

- The best power-to-weight ratio
- Wide torque range to suit multiple applications
- Unmatched reliability delivered by one of the most advanced engineered gear boxes on the market
- Very compact design resulting in lower weight and better accessibility
- Controlled bolting accuracy of +/- 4% and repeatability of +/- 2%.



DX video

### Extreme torque wrenches for heavy duty applications!

#### All RAD Pneumatic tools include:

- Reaction arm and retaining ring
- 3.6 meter hose
- Lightweight FRL unit
- Lubricating oil for the FRL unit
- User manual
- Calibration certificate
- Safety instruction USB stick.

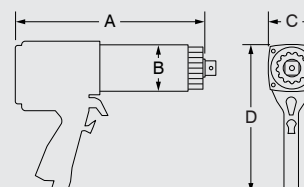


#### FRL Unit:

- Low weight (2kg) tool holder made from High Density Polypropylene
- Includes pressure gauge, filter, regulator and lubrication



At a surcharge, the RAD pneumatic series torque wrenches (excluding TV RAD) can be delivered according to EX specification. See RAD's website for more information.



Toolkit	Tool	Drive size	Torque (Nm)		Speed	Weight	Noise level	Dimensions (mm)			
Number	Model	Inches	Min	Max	RPM	Kg	dB	A	B	C	D
15616	100 SL	3/4" or 1/2"	35	100	275	2,1	80	161	60	69	222
15134	275 SL	3/4"	50	275	90	2,2	80	167	60	69	222
13573	475 SL	3/4"	70	475	65	2,4	80	167	60	69	222
13539	10 GX	3/4"	150	950	30	3,4	80	228	63	69	228
13549	14 GX	3/4"	275	1.350	20	3,6	80	228	63	69	228
19135	20 DX	1"	400	2.000	9	3,9	80	203	69	70	205
13565	34 GX	1"	700	3.400	9	6,1	85	246	77	83	241
24717	40 DX	1"	1.200	4.000	8	6,6	85	230	86	83	264
13571	46 GX	1"	1.400	4.600	12	9,0	85	325	86	93	264
26133	70 DX	1 1/2"	2.000	7.000	8	10,7	85	285	92	93	264
15805	80 DX	1 1/2"	2.700	8.000	7	12,5	85	348	101	101	277
23229	110 DX	1 1/2"	3.400	10.800	4	13,8	85	431	114	114	279
26153	150 DX	1 1/2"	5.400	15.000	3	19,0	85	353	127	127	281



## RAD 2-speed series

RAD 2-speed series torque wrenches incorporate a precision engineered 2-speed gearbox designed for faster run down and quick reaction point positioning on time sensitive bolting applications.

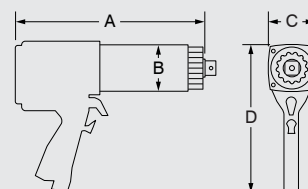


2-speed video

- The 2-speed models feature a unique full automatic gearbox design, eliminating the time consuming switch between high and low speed gear
- Smooth continuous flow of controlled torque eliminating destructive hammering
- RAD 2-speed series reduce operator strain and injury, resulting in increased productivity
- Controlled torque accuracy of +/- 4% and repeatability of +/- 2%.



**Ex** At a surcharge, the RAD pneumatic series torque wrenches (excluding TV RAD) can be delivered according to EX specification. See RAD's website for more information.



Toolkit	Tool	Drive size	Torque (Nm)		Speed	Weight	Noise level	Dimensions (mm)			
Number	Model	Inches	Min	Max	RPM	Kg	dB	A	B	C	D
13575	475 SL-2	3/4"	150	475	300	3,7	80	228	60	69	222
19774	14 GX-2	3/4"	450	1.350	85	4,5	80	262	63	69	205
19775	20 DX-2	1"	700	2.000	50	4,8	80	250	69	69	205
19776	34 GX-2	1"	950	3.400	44	7,6	80	305	77	83	241
24952	40 DX-2	1"	1.400	4.000	49	7,3	80	309	81	83	241

## TV-RAD series - built in transducer verification

The TV-RAD series solves an ongoing problem in the bolting industry:

Incorrect air supply and wrong tool operation can cause differences in torque output of your tools.

With RAD's TV wrench, the operator gets a clear visual indication whether the actual torque is deviating from the set target torque, therefore reducing errors in the bolting process. At the same time very high torque accuracy can be achieved when using the real time Bluetooth torque graphing mode.



TV-RAD video

### **RAD's Pneumatic torque wrench with built in transducer for precise torque verification**

**TV-RAD is available in four models:**

- 10 GX TV
- 14 GX TV
- 20 DX TV
- 46 GX TV

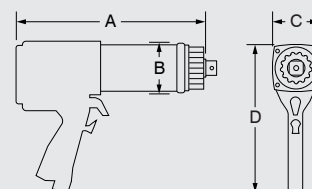
Besides on-site joint calibration, this pneumatic torque wrench has several useful functions such as:

- Easy data logging and collection
- Instant torque readout
- Real time graphs
- 'Pass' or 'Fail' indicator light
- Repeatability +/- 2%, accuracy transducer +/- 1%
- Smartphone / tablet App
- Bluetooth connectivity



### **Connectivity**

The TV-RAD can be connected to an Android device by using the RAD Connect App. Additionally, RAD-software can be used to connect the torque wrench to a PC.



Toolkit Number	Tool Model	Drive size Inches	Torque (Nm)		Speed RPM	Weight Kg	Noise level dB	Dimensions (mm)			
			Min	Max				A	B	C	D
22017	10 GX-RTV	3/4"	150	950	30	4,6	80	290	72	69	228
22079	14 GX TV	3/4"	275	1.350	20	4,1	80	243	72	69	228
22887	20 DX TV	1"	400	2.000	9	4,2	80	234	69	70	205
22018	46 GX TV	1"	1.400	4.600	12	10,5	85	339	92	93	264



## RAD wheel nut bolting series

The RAD wheel nut bolting series was designed with one job in mind: wheel nut bolting where torque control is a must. Accidents caused by incorrect tightened wheel nuts are considered a serious problem in the industry. Especially impact wrenches are notorious for these problems, while at the same time they increase the risk of HAVS related injuries. RAD planetary gear torque wrenches are vibration free and have the accuracy to prevent accidentally under - and over tightening. The fixed nose extensions are ideal for reaching wheel nut studs that are recessed and where tool clearance is a problem.

- Removable custom reaction arms designed to fit virtually on any wheel configuration
- Extended reaction point for safe and quick operation
- High accuracy to ensure correctly tightened wheels



### The fixed nose extension (-R)

was developed exclusively for heavy duty maintenance of mining haul trucks from 50-400 ton capacities and front end loaders. The extended nose allows safe access of virtually all wheel configurations found on today's heavy equipment.

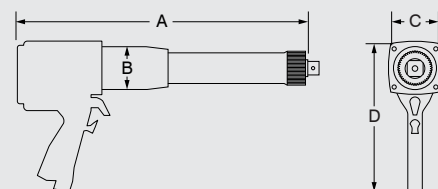


### The nose extension kit (-NX)

was designed with flexibility in mind. Complete with 3 different reaction arms and a nose extension for hard-to-reach areas, the GX-NX Kit is a go anywhere tool capable of a variety of applications but especially suitable for off-road construction equipment.



At a surcharge, the RAD pneumatic series torque wrenches (excluding TV RAD) can be delivered according to EX specification. See RAD's website for more information.



Toolkit	Tool	Drive size	Torque (Nm)		Speed	Weight	Noise level	Dimensions (mm)			
Number	Model	Inches	Min	Max	RPM	Kg	dB	A	B	C	D
13541	10 GX-R	3/4"	400	950	115	5,4	80	368	63	69	228
20809	20 NDX-R	1"	400	2.000	10	7,3	80	542	69	70	204
13563	2400 NGX-R	1"	700	2.450	10	12,4	85	546	76	83	241
Number	Model	Inches	Min	Max	RPM	Kg	dB	A	B	C	D
14550	14 GX-NX	3/4"	275	1.350	20	3,6	80	228	63	69	228
19340	20 DX-NX	1"	400	2.000	10	3,9	80	203	69	70	205
15522	34 GX-NX	1"	1.000	3.400	8	6,1	85	318	77	83	241

## B-RAD SELECT BRUSHLESS SERIES

B-RAD SELECT Brushless series torque wrenches offer high output, adjustability, and reliability.



B-RAD SELECT video

### Up to 7.000 Nm

The B-RAD SELECT Brushless is now even more powerful, faster and lighter.

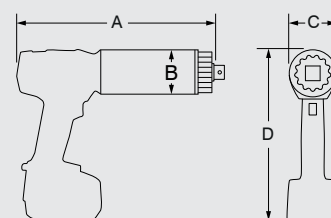
### Cordless torque!

The B-RAD SELECT Brushless is especially suitable for installation and service jobs where electricity or compressed air are not available. Besides this, the B-RAD SELECT Brushless is also an ideal tool for valve actuation, load strapping and for driving spindles. The number of cycles per battery depends on stud length, lubrication and temperature.

- Brushless motor.
- Automatic reaction arm release.
- Available in single and automatic 2-speed gearbox.
- Latest Lithium-ion 18V/5.2Ah battery technology.
- Repeatability 4%.

### All B-RAD tools include:

- Reaction arm and retaining ring.
- Two 18V / 5.2 Ah Lithium-ion batteries with fast charger.
- Calibration certificate.
- Weatherproof storage case.
- Safety instruction on USB drive.
- User manual.



Toolkit	Tool	Drive size	Torque (Nm)		Speed	Weight	Noise level	Dimensions (mm)			
Number	Model	Inches	Min	Max	RPM	Kg	dB	A	B	C	D
25091	B-RAD SELECT BL 275	3/4" or 1/2"	60	275	45	3,2	65	220	63	68	262
28264	B-RAD SELECT BL 700	3/4"	175	700	21	3,5	65	231	63	67	262
28266	B-RAD SELECT BL 1400	3/4"	300	1.400	10	3,5	65	231	69	67	262
28267	B-RAD SELECT BL 1400-2	3/4"	300	1.400	71	4,3	65	279	63	67	262
28268	B-RAD SELECT BL 2000	1"	400	2.000	6	4,0	65	244	69	69	262
28269	B-RAD SELECT BL 2000-2	1"	400	2.000	19	4,9	65	298	69	69	262
28270	B-RAD SELECT BL 4000	1"	800	4.000	3	6,0	65	285	81	81	266
28271	B-RAD SELECT BL 4000-2	1"	800	4.000	19	6,7	65	337	81	81	266
28272	B-RAD SELECT BL 7000	1,5"	1.400	7.000	2	8,8	65	295	95	95	272

## Introducing

# THE B-RAD SELECT BRUSHLESS!

### What has changed?

The new B-RAD SELECT brushless sets the industry standard for high torque battery wrenches. RAD, the inventor of the battery torque wrench, has raised the bar again with unmatched performance in terms of weight, speed, power and ergonomics.

#### Motor

- Brushless – less wear and tear.
- Very low noise level – 65dB.
- Automatic reaction arm release.

#### Gearbox

- Shorter and lower weight.
- Up to 7.000 Nm capacity.
- Special alloy cast reaction arm, lighter and stronger.

#### Controls

- Large buttons for easy menu navigation.
- Clear Nm or Ft.Lbs indication.
- Bright display with clear torque setting.
- Low battery warning indication.

#### Battery

The new SELECT brushless has better battery endurance and energy saving. The new brushless model nearly doubles the number of bolt cycles as compared to the previous SELECT model with the same 18v 5.2Ah battery.



## Optional accessories

Double trigger control for added safety



Adjustable handle for easy handling



Drop prevention bracket



8.0Ah Li-Ion High capacity battery





## Digital B-RAD PLUS series

Digital B-RAD series torque wrenches are the world's first digital, cordless and lithium-ion battery tool on the market. With advanced technology containing digital display and single increment torque settings.



DB-RAD PLUS video

### Digital cordless torque!

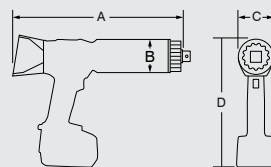
- Automatic 2-speed gearbox
- Latest Lithium-ion 18V/5.2 Ah battery technology
- More ergonomic OLED-Display
- Programmable preset torque settings
- Multi-level password protection
- High accuracy (+/- 4%) guaranteed through battery monitoring system
- Includes Angle of turn function
- Automatic reaction arm release.



Standard  
Screen protector to  
prevent damage  
to the screen

### All digital B-RAD tools include:

- Reaction arm and retaining ring
- Calibration certificate
- Two 18V / 5.2 Ah batteries with fast charger
- User manual
- Weatherproof storage case
- Safety instruction USB drive.



Toolkit	Tool	Drive size	Torque (Nm)		Speed	Weight	Noise level	Dimensions (mm)			
Number	Model	Inches	Min	Max	RPM	Kg	dB	A	B	C	D
200425	DB-RAD PLUS 700-2	3/4"	70	700	39	5,0	80	324	63	76	279
200426	DB-RAD PLUS 1400-2	3/4"	140	1.400	18	5,2	80	330	63	76	279
200427	DB-RAD PLUS 2000-2	1"	200	2.000	12	5,3	80	349	56	76	279
200428	DB-RAD PLUS 4000-2	1"	400	4.000	11	6,8	80	398	81	81	279

## MV-RAD electric series

### ● Torque range: 65 – 11.000 Nm

The MV-RAD will quickly tighten or loosen bolts with accuracy and reliability. The torque can be set by a membrane key control by single increment or with 200 setting options. Torque and more parameters can be programmed individually on custom demands. In addition, this torque wrench is equipped with angle function.



MV-RAD video

### ● The MV-RAD features a special Bolt Check function (optional)

This program allows the operator to check if an already tightened bolt is still within torque specification. The MV-RAD is able to verify the existing torque and will not add any extra torque while doing this. If the bolt requires further tightening, it will do so automatically and report the degrees of turn needed.

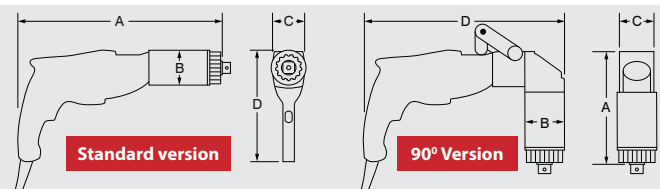
The 230V or 115V power operation allows the MV-RAD to be used in a variety of places with only 80 dB noise level. Each pistol torque wrench comes fully calibrated in a storage case and includes reaction arm, calibration certificate and operating manual.

- High performance bolting tool with torque shut-off system
- Pistol grip with membrane key and OLED-Display
- Single increment or 200 torque setting options
- Angle function
- Password protected
- 360° rotatable handle
- 8 Programmable presets
- Programming on custom demands
- Bolt check function (optional).



### All MV-RAD tools include:

- Reaction arm and retaining ring
- Weatherproof storage case
- Safety instruction USB drive
- User manual.



Toolkit		Tool	Drive size	Torque (Nm)		Speed	Weight	Noise level	Dimensions (mm)			
Number	Model	Inches	Min	Max	RPM	Kg		dB	A	B	C	D
200278	MV-RAD 6	3/4"	65	650	34	3,9		80	350	63	73	210
200279	MV-RAD 14	3/4"	140	1.400	11	4,9		80	310	63	73	210
200289	MV-RAD 14-90°	3/4"	140	1.400	13	5,3		80	176	63	73	395
200280	MV-RAD 21	1"	215	2.150	5	6,7		80	338	76	73	210
200281	MV-RAD 34	1"	340	3.400	4	7,0		80	450	76	73	210
200282	MV-RAD 34-90°	1"	340	3.400	6	7,5		80	220	80	73	395
200283	MV-RAD 45	1"	450	4.500	3	8,8		80	495	86	73	210
200284	MV-RAD 45	1 1/2"	450	4.500	3	8,8		80	495	86	73	210
200345	MV-RAD 45-90°	1" or 1 1/2"	450	4.500	3	9,5		80	252	86	73	404
200285	MV-RAD 60	1 1/2"	600	6.000	2	12,7		80	535	101	73	210
200287	MV-RAD 70	1 1/2"	700	7.000	2	9,5		80	429	95	73	226
200325	MV-RAD 70-90°	1 1/2"	700	7.000	2	10,4		80	245	95	73	409
200286	MV-RAD 80	1 1/2"	800	8.000	2	11,7		80	500	102	73	210
200395	MV-RAD 110	1 1/2"	2.100	11.000	1	17,0		80	510	108	73	232
200466	MV-RAD 110-90°	1 1/2"	2.100	11.000	1	13,6		80	269	108	73	415

## E-RAD BLU - setting bolting standards higher

E-RAD BLU series precision torque wrenches are designed to provide a high degree of accuracy of +/- 3% and repeatability of +/- 2% for high torque applications in combination with advanced tool functions and data logging. This advanced electronic pistol grip torque wrench combines RAD's proven gearbox design and AC Servo motor technology to reduce bolting time with at least 300% as compared to conventional hydraulic wrenches. Built and designed for high cycle, heavy-duty industrial usage, indoor and outdoor.



E-RAD BLU video

### ● Reducing cost - Multiple wrenches can be used with one control box!



### E-RAD BLU tool kits include:

- E-RAD BLU (-S) wrench
- Control box cable
- Control box with USB and LAN port
- Operator's manual
- Reaction arm and retaining ring
- Calibration certificate
- Data logging software
- Safety instruction USB drive.

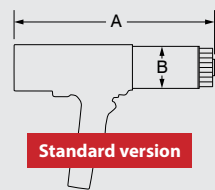
### E-RAD BLU (-S) Tool features:

- Highly advanced Data Logging and Tool Management features
- Capable of torque and angle bolting sequence
- Operator identification and Batch count to ensure traceability
- Password protection for three user levels: basic, intermediate and advanced
- LED indicator lights (Pass/Fail) located on both sides for maximum ergonomics
- Life cycle and maintenance counters
- Rotatable gearbox to avoid pinch hazard
- Active cooler system on controller and wrench.

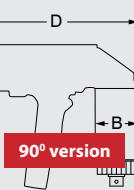
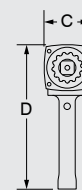
50 X 76 mm touch screen



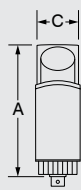
### ● Select toolkit and if needed additional wrenches:



Standard version



90° version



Toolkit	Wrench only	Tool	Drive size	Torque (Nm)		Speed	Weight	Dimensions (mm)			
Number	Number	Model	Inches	Min	Max	RPM	Kg	A	B	C	D
21985	22056	E-RAD BLU 950	3/4"	135	950	30	5,4	340	65	78	275
24162	23330	E-RAD BLU 2000	1"	270	2.000	17	5,9	340	69	78	275
21986	22057	E-RAD BLU 3400	1"	340	3.400	10	8,1	380	76	78	275
22434	23113	E-RAD BLU 3400-90°	1"	340	3.400	10	8,3	220	76	78	295
21987	22058	E-RAD BLU 4000	1"	675	4.050	8	10,6	430	83	88	290
200415	200416	E-RAD BLU 4000	1 1/2"	675	4.500	8	10,6	430	83	88	290
21988	22059	E-RAD BLU 8000	1 1/2"	1.385	8.100	4	13,0	430	100	100	295
21989	22060	E-RAD BLU 10K	1 1/2"	2.034	10.000	2	15,0	430	105	105	298
24224	23748	E-RAD BLU 15K	1 1/2"	4.050	15.000	2	20,1	466	127	127	305

\* 15K Available upon request with 16.500 Nm and 2 1/2" SD.



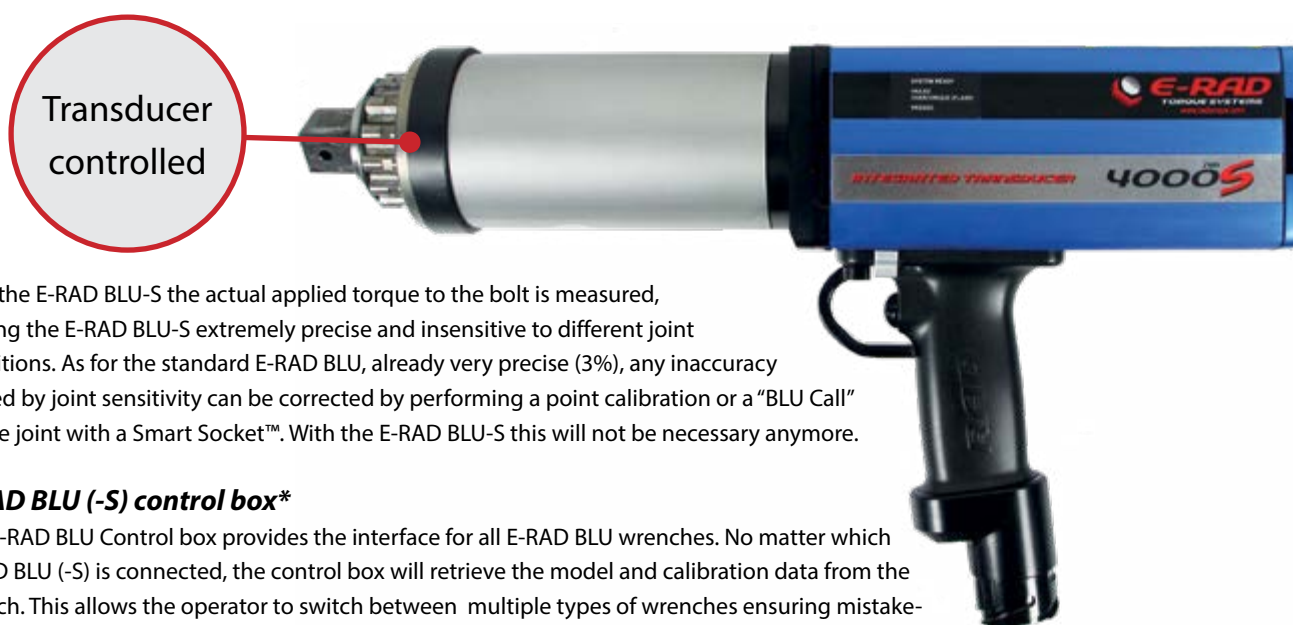
## E-RAD BLU-S Transducer controlled

### Continuously measures and controls the actual applied torque to the bolt during the tightening process

In addition to the regular E-RAD BLU models, RAD also offers the E-RAD BLU with transducer controlled torque shut off (S). This system achieves an ever higher torque accuracy (2%) than the regular E-RAD BLU and is especially suitable for situations where the E-RAD BLU is used for a wide variation of joint types (hard/soft).

### What difference does the "S" make?

The "S" version of the E-RAD BLU distinguishes itself from the standard model in that it is equipped with a strain gauge torque transducer in the annulus of the gearbox. Instead of measuring the servo motor current to determine the precise shut off torque, the "S" goes a step further in that it actually controls the precise moment of the torque shut off by means of the torque transducer's measurements.



With the E-RAD BLU-S the actual applied torque to the bolt is measured, making the E-RAD BLU-S extremely precise and insensitive to different joint conditions. As for the standard E-RAD BLU, already very precise (3%), any inaccuracy caused by joint sensitivity can be corrected by performing a point calibration or a "BLU Call" on the joint with a Smart Socket™. With the E-RAD BLU-S this will not be necessary anymore.

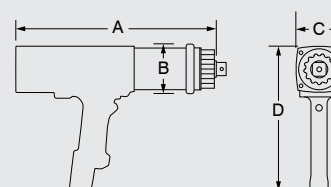
### E-RAD BLU (-S) control box\*

The E-RAD BLU Control box provides the interface for all E-RAD BLU wrenches. No matter which E-RAD BLU (-S) is connected, the control box will retrieve the model and calibration data from the wrench. This allows the operator to switch between multiple types of wrenches ensuring mistake-free operation. No torque conversion charts are needed, as opposed to conventional systems.

The E-RAD BLU -S works on a standard control box with a recent software version.

- Standard delivered with 230V control box (Product Number: 21220) and 4,5 m cable (21217)
- Optional 120V control box (Product Number: 21221).

### Select toolkit and required cable length:



Toolkit	Tool	Drive size	Torque (Nm)		Speed	Weight	Dimensions (mm)			
Number	Model	Inches	Min	Max	RPM	Kg	A	B	C	D
21985	E-RAD BLU 950-S	3/4"	135	950	30	5,6	365	92	78	245
21986	E-RAD BLU 3400-S	1"	340	3.400	10	8,4	405	97	78	245
21987	E-RAD BLU 4000-S	1"	675	4.050	8	10,9	455	110	88	260
21988	E-RAD BLU 8000-S	1 1/2"	1.385	8.100	4	13,4	455	127	100	260
21989	E-RAD BLU 10K-S	1 1/2"	2.034	10.000	2	15,5	455	132	105	265

Toolkit	Cable length selection	Dimensions (ft/m)
Number	Description	length
21217	Cable assembly E-RAD BLU (short, included with standard tool kit)	15 / 4,6
21218	Cable assembly E-RAD BLU (middle)	20 / 6,1
21219	Cable assembly E-RAD BLU (long)	25 / 7,6

## RAD Smart Socket™ series

- **Revolutionary socket for measuring torque directly on the bolt up to 16.200 Nm with an accuracy of < 1%**



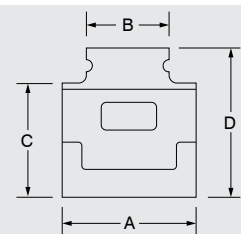
Smart Socket video



Uses RAD Torque's transducer technology combined with custom sockets to measure the torque applied to the bolt during a torque cycle. By innovative design, the Smart Socket™ is no larger than a standard socket. It's compact size and innovative technology makes the Smart Socket™ a perfect audit tool for inspecting bolted joints and can function as a master calibration for various torque tools.

### Intelligent Sockets

- Measures and displays peak torque
- Build-in rechargeable battery
- "Pass" or "Fail" indication function
- Data logging – download logs (XLS, CSV, PDF)
- Free software included
- Full traceability of bolted joints
- Including pre-installed tablet.



Toolkit Number	Tool Model	Drive size Inches	Torque (Nm)		Weight Kg	Dimensions (mm)			
			Min	Max		A	B	C	D
20879	33 mm Smart Socket™	3/4" of 1"	200	2.034	1,2	72	42	70	100
21363	36 mm Smart Socket™	1"	200	2.034	1,2	72	54	65	100
22158	41 mm Smart Socket™	1"	200	2.034	1,2	72	54	65	87
20880	46 mm Smart Socket™	1"	200	2.034	1,2	72	54	65	87
20881	50 mm Smart Socket™	1"	400	4.050	1,4	86	54	69	89
20882	55 mm Smart Socket™	1"	400	4.050	1,5	86	54	69	89
20883	60 mm Smart Socket™	1"	400	4.050	1,5	86	54	69	89
23690	65 mm Smart Socket™	1 1/2"	1.100	10.800	4,0	115	87	90	121
20884	70 mm Smart Socket™	1 1/2"	1.100	10.800	4,0	115	87	90	121
20885	80 mm Smart Socket™	1 1/2"	1.100	10.800	4,0	115	87	90	121
25657	90 mm Smart Socket™	1 1/2"	1.100	16.200	5,8	131	99	99	115
25658	100 mm Smart Socket™	1 1/2"	1.100	16.200	7,2	146	99	99	120

Other sizes are available on request.

## RAD Transducers series

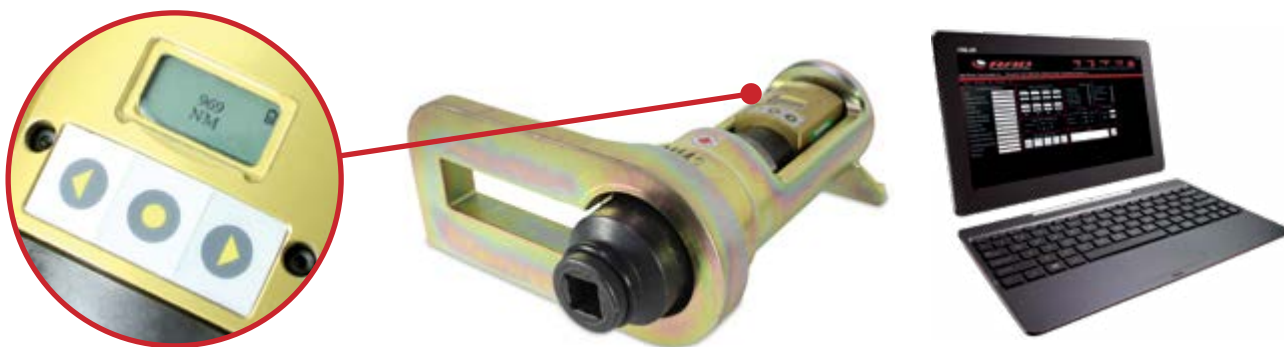
### ◆ Torque range: 100 – 9.500 Nm

The accuracy and the repeatability of RAD Calibration benches have earned an excellent reputation in calibration laboratories around the world. The completely new RAD Calibration System was specially designed to calibrate RAD (and similar) torque wrenches. It is also possible to verify hydraulic torque wrenches' accuracy with this system. The system is available with different transducer sizes, depending on the required torque.

The calibration values can be read directly from the transducer screen. In addition, the calibration values can be read and stored by linking the RAD transducer to the supplied tablet using the RAD pneumatic calibration software. The RAD Calibration System consists of a Tube Stand, the transducer, the simulation joint, impact sockets and a tablet with the requisite (pre-installed) RAD pneumatic calibration software.



Calibration bench video



### Product features:

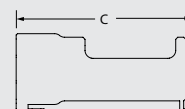
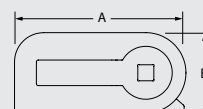
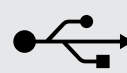
- Torque range up to 9,500 Nm
- Fully traceable calibration system, with recognized ISO 17025 calibration certificate
- Screen on transducer makes it easy to read calibration value
- Fast and easy link with RAD pneumatic calibration software using tablet
- Up to 2,050 Nm classified up to BS 7882:2008 as Class 1 or better for primary torque range (+/- 0.5% of the reading from 20% to 100% of the full scale)
- From 1,900 Nm to 9,500 Nm classified up to BS 7882:2008 as Class 0.5 or better for primary torque range (+/- 0.25% of the reading from 20% to 100% of the full scale)
- The transducer is interchangeable with previous RAD RCA Calibration benches.

### All RAD Calibration benches include:

- Tube stand
- Impact sockets
- Simulation joint
- Tablet + software
- ISO 17025 accredited calibration certificate



**LABORATORY  
ACCREDITATION  
BUREAU**  
ACCREDITED ISO/IEC 17025



Toolkit	Tool	Drive size	Torque (Nm)		Weight	Dimensions (mm)		
Number	Model	Inches	Min	Max	Kg	A	B	C
23442	CALIBRATION SYSTEM RAD 1500	1"	100	2.000	11,8	247	138	281
23443	CALIBRATION SYSTEM RAD 3500	1"	250	4.750	24,4	368	177	332
23444	CALIBRATION SYSTEM RAD 7000	1½"	475	9.500	24,4	368	177	332

Prod Nr.	Tool
Number	Model
24305	RAD 1500 TRANSDUCER ASSEMBLY
24120	RAD 3500 TRANSDUCER ASSEMBLY
23164	RAD 7000 TRANSDUCER ASSEMBLY



# Accessories

## Reaction arms

Each RAD tool includes a standard reaction arm. Please consult [www.radtorque.nl](http://www.radtorque.nl) for dimensions and part numbers.

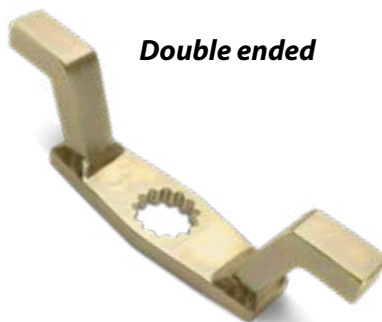
### Standard



### Deep Socket



### Double ended



### Various models of weldable blanks



## Custom designed reaction arms

If a standard reaction arm is not suitable for the job, RAD is able to provide you quickly a custom engineered reaction arm fully within safety standards. Check website for custom RA forms. In addition to this, blank weldable reaction arms can be supplied for quick and easy customization.

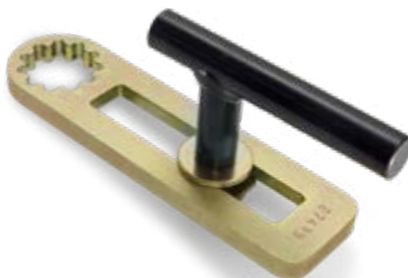
## Safety sliding reaction arm

To reduce the pinching risk significantly RAD has developed sliding reaction arms. This also optimize the reaction point.

### Curved reaction arm



### Sliding reaction arm



### Tube reaction arm



## Tool accessories

To further enhance the productivity and safety of RAD torque tools RAD has developed a wide range of accessories. For further details, please visit our website [www.radtorque.eu](http://www.radtorque.eu).

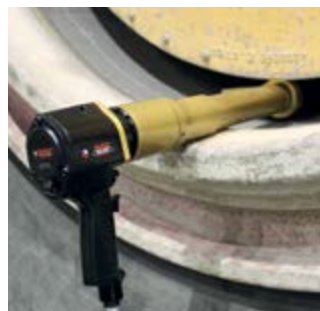
### Impact sockets



### SDM Low Profile



### RAD nose extensions



### Offset gearboxes



## RAD's advanced safety systems

Ergonomics and safety are very important during the design phase of any new RAD tool. In addition to making the job more ergonomic and safe, RAD wishes their tools to be easy to use, powerful, accurate and very reliable. RAD believes safety features should not impede workplace efficiency and speed, but should make workers aware of the risks involved in working with powerful tools.

RAD has developed a range of ergonomic and safety enhancing features:

### Ergonomic features:

- RAD's patented planetary gear reduction drive system delivers 88 times less vibration than impact wrenches
- No risk of HAVS injuries (Hand-Arm-Vibration-Syndrome)
- Pistol grip trigger/control reduces operator fatigue
- RAD's low profile reaction arm eliminates all the operational load on the operator



### Tool safety features:

- User manual
- Double safety trigger (option)
- Safety instructions on USB drive
- Trigger guard kit for E-RAD series
- Safety sliding reaction arm (option)
- Hand guard kit for E-RAD and pneumatic series
- Warnings and attention notifications on tool and case

#### Trigger guard kit for E-RAD series



#### Double safety trigger for pneumatic series



#### Hand guard kit for E-RAD and pneumatic series



#### Safety sliding reaction arm



Product	Safety feature	Suitable for
Number	DOUBLE SAFETY BUTTON	RAD Torque Tool model
25949	B-RAD SELECT Double Safety Button	All B-RADs
Number	DOUBLE SAFETY TRIGGER	RAD Torque Tool gearbox
200142	Double safety trigger for NPW 120	100 SL, 275 SL, 475 SL, 10 GX, 14 GX, 20 DX
200143	Double safety trigger for NPW 180	34 GX, 40 DX
200144	Double safety trigger for NPW 200	46 GX, 70 DX, 110 DX, 150 DX
Number	SWIVELLING TOOL HANDLE	RAD Torque Tool gearbox
15961	Swivelling tool handle	14 GX
15959	Swivelling tool handle	34 GX
15958	Swivelling tool handle	40 DX
14491	Swivelling tool handle	46 GX
15956	Swivelling tool handle	80 DX
22931	Swivelling tool handle	110 DX



*Master Distributor for the EMEA region:*

**RAD Torque Systems B.V.**

**Zuidergracht 19**

**3763 LS Soest**

**The Netherlands**

**Phone: +31 (0)35 - 5882450**

**E-mail: [info@radtorque.nl](mailto:info@radtorque.nl)  
[sales@radtorque.nl](mailto:sales@radtorque.nl)  
[techsupport@radtorque.nl](mailto:techsupport@radtorque.nl)**



**[www.radtorque.eu](http://www.radtorque.eu)**



***Your local RAD distributor:***